

Ballet by Stijn D'hondt

Ballet handle on studio rose

About the collection

Ballet collection designed by Stijn D'hondt is inspired by ballet dance. For the designer, Ballet is a field of tension between discipline and frivolity. This was translated into a design where dynamic is the multiplication of the straight lines and the characteristic curve. A feeling that is visibly present and sensible in the hand.

"Dance enables a mix of an aesthetic pleasures, a dynamic pleasure and an emotional one. Limited explanations, limited anecdotes – yet unlimited sensations."

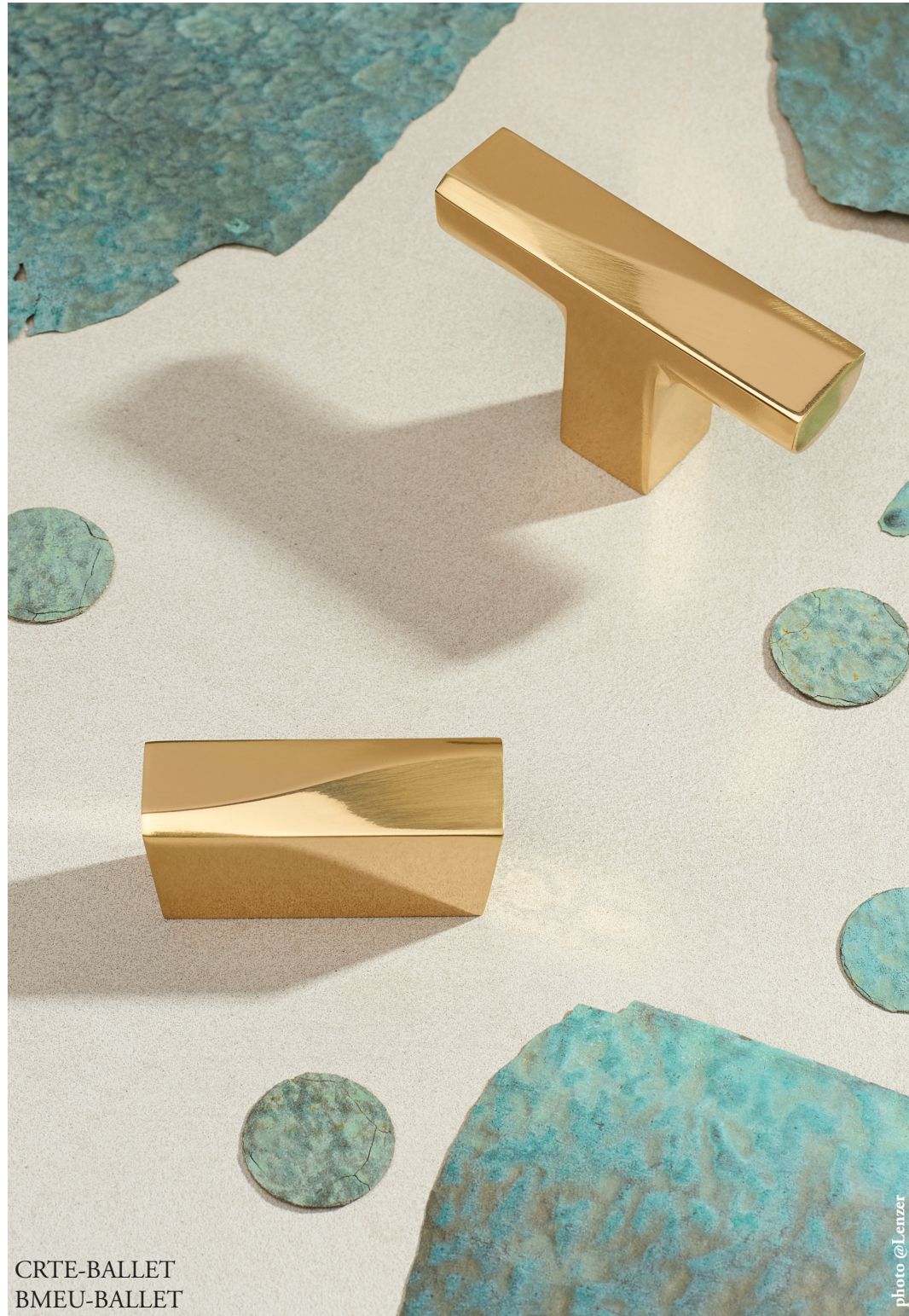
-Maurice Béjart

Meet the designer

Stijn D'hondt is Pinscher's founder and art director. A true Belgian, born and bred in the cradle of brilliant absurdism and surrealism. In addition to being a West Fleming, he is also an ambitious world citizen.



Ballet furniture olivette and furniture knob



CRTE-BALLET
BMEU-BALLET

photo @Lenzer

Light Ballet handle on 759 rose



BEQU-BALLET-LIGHT - ROSA-759

photo @Lenzer

Horizontal Ballet pull handle, left and right



TIRA-BALLET

Vertical Ballet pull handle, custom length



TIRA-BALLET

Ballet handle and Ballet thumb turn, both on studio roses

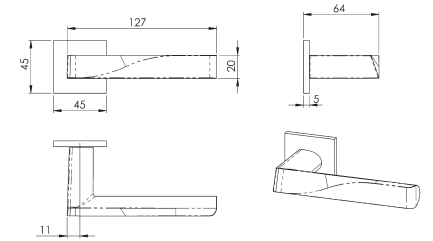


BEQU-BALLET - ROSA-STUDIO-C45
BCON-BALLET - ROSA-STUDIO-C45

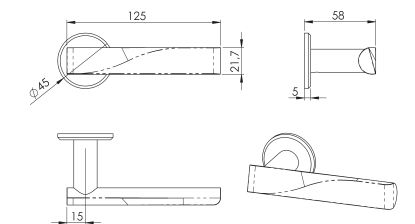
The Ballet collection is manufactured in solid brass, and available in polished/satin brass and brown bronze. Other finishes are available on demand. There is a standard and a light lever handle. The long pulls are always satin/brushed inside the curves and can be polished on the outside.

Door handles

BEQU-BALLET
lever handle on studio rose
left or right
spindle square 8mm

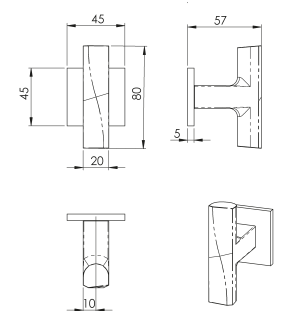


BEQU-BALLET-LIGHT
lever handle light without rose
left or right
spindle square 8mm

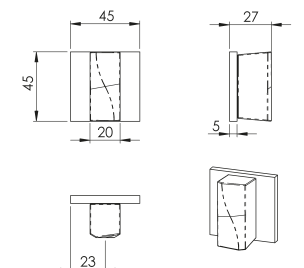


Door accessories

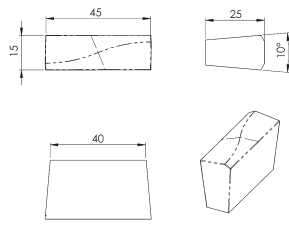
CROS-BALLET-GM
door olive on studio rose
vertical
spindle square 8mm



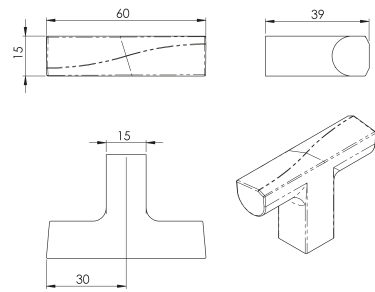
BCON-BALLET
thumb turn on studio rose
spindle square 8mm



Furniture knobs

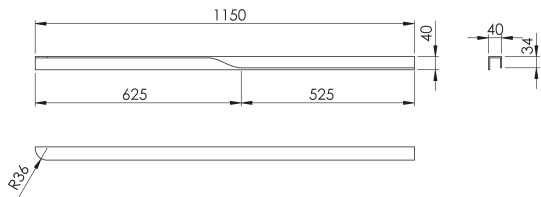


BMEU-BALLET
furniture knob

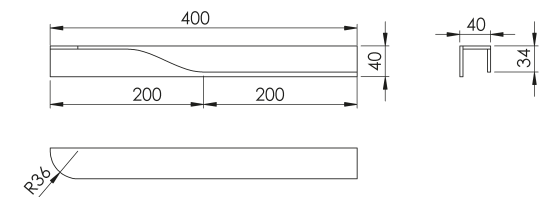


CRTE-BALLET
small furniture olive

Other door handles



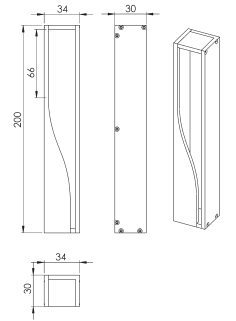
TIRA-BALLET-1150
large pull handle
4mm recessed and glued
vertical or horizontal
left or right
*custom sizes available
*possible to complete with brass pieces to make the full length of the door



TIRA-BALLET-400
pull handle
4mm recessed and glued
vertical or horizontal
left or right
*custom sizes available
*possible to complete with brass pieces to make the full length of the door

Other door handles

CUVE-BALLET
dressing flush
recessed and glued
minimum door thickness : 32mm
*left or right



PMEN-BALLET
for 40mm doors only
sliding door flush recessed on the edge
«push-pull-slide»
recessed and glued
vertical

